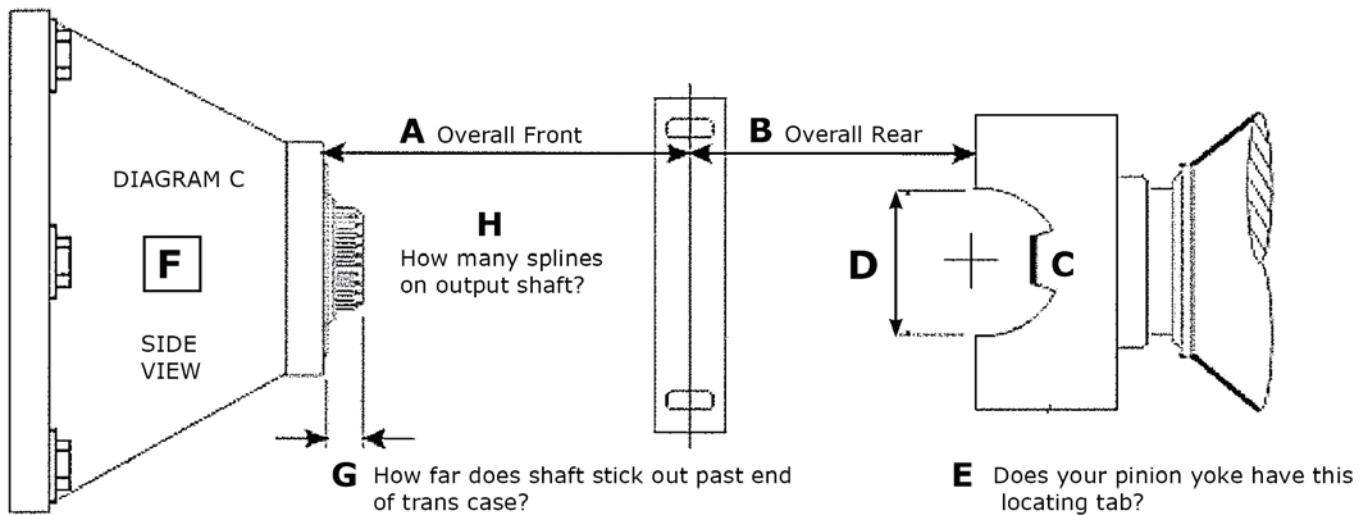


Driveshaft Measurement Guide: C

This guide is used for 2 piece shafts with a centre support bearing.

Vehicle: _____

Estimated HP/KW: _____



| Items to Measure | | Measurement (mm) |
|------------------|--|------------------|
| A | What is the overall length measurement from the end of the trans case to the centre of the support bearing as shown in the drawing? | |
| B | What is the overall length measurement from the centre of the support bearing mount to the flat surface on the pinion yoke as shown in drawing? <i>Measure with the rear at ride height or the vehicle on the ground.</i> | |
| C | How wide is the rear u-joint? <i>If you are measuring a u-joint, measure including caps. If you are measuring the pinion yoke: With locating tab style, measure between tabs. Without locating tabs, measure all the way across the pinion yoke.</i> | |
| D | What is the u-joint cap diameter that fits into pinion yoke? | |
| E | Does it have the locating tab? | Yes / No |
| F | What gearbox is this? | |
| G | How far does the shaft stick out past the end of trans case? <i>Compress the seal if necessary</i> | |
| H | How many splines on the output shaft? | |

Contact us if you have questions about your measurements or concerns about your driveshaft.

To get a quote for your vehicle today, please get in touch via sales@dbsp Perth.com.au. Someone from our friendly team will be in touch shortly to discuss your driveshaft enquiry.